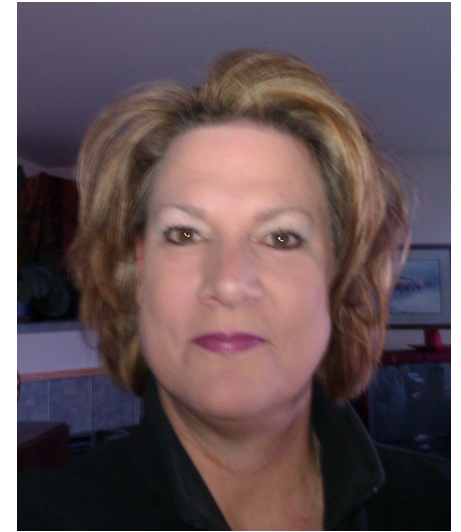




Rhonda Kline



Rhonda has been consulting in organizational and executive development for 27 years, leading the design and implementation of Alston-Kline, Inc's services in executive assessment and coaching, talent acquisition, and testing and assessments. She has a B.A. in Psychology from Occidental College, a Master's in Counseling Psychology from Trinity College, and a Ph.D. in Clinical Psychology / Organizational Development from International College.

Certified in several tools including the Myers Briggs® and Birkman Method™, with 20 plus years working in diverse industries, in non-profit and for profit sectors, her expertise is both broad and deep in functional areas of operations, sales and marketing, and specialty areas of leadership development, behavioral change strategies, and interpersonal communication strategies that lead to enhanced work performance.

She is particularly passionate about educating organizations and individuals in theories of intelligence, focusing on how people learn and how understanding emotional intelligence can be leveraged to increase performance and grow high potential employees. Before Alston-Kline, Rhonda spent 5 years at World Vision, Inc. in technical training, executive assessment and human resources.

She loves family, friends, work and seeking to live the Word of God. Her most cherished scripture is found in the Book of Psalms, because of its broad expression of our human condition, and its hope filled consolation of God's all encompassing compassion, protection and love.